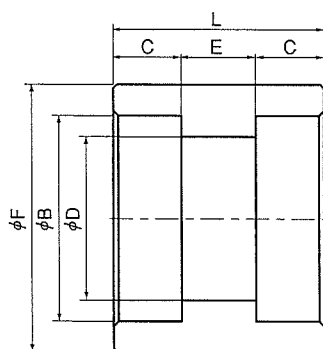


炭素鋼

フルカップリング



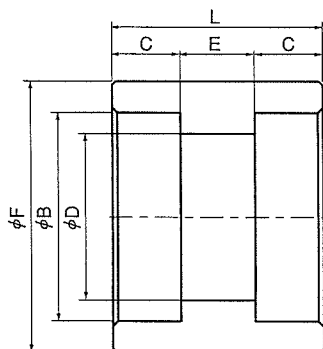
FC SW

単位:mm

呼称	記号	B	F	C	D		E	L
					1 欄	2 欄		
A	B	Sch 80						
8A	1/4	14.3	22.0	10.0	9.4	7.8	6.4	26.4
10A	3/8	17.8	27.0	13.0	12.7	10.9	6.4	32.4
15A	1/2	22.2	32.0	13.0	16.1	14.3	9.5	35.5
20A	3/4	27.7	38.0	15.0	21.4	19.4	9.5	39.5
25A	1	34.5	46.0	16.0	27.2	25.0	12.7	44.7
32A	1 1/4	43.2	57.0	18.0	35.5	32.9	12.7	48.7
40A	1 1/2	49.1	63.0	19.0	41.2	38.4	12.7	50.7
50A	2	61.1	75.0	22.0	52.7	49.5	19.1	63.1
65A	2 1/2	77.1	95.0	26.0	65.9	62.3	19.1	71.1
80A	3	90.0	110.0	29.0	78.1	73.9	19.1	77.1
100A	4	115.4	138.0	35.0	102.3	97.1	25.4	95.4
A	B	Sch 160						
15A	1/2	22.2	35.0	14.0	12.3		9.5	37.5
20A	3/4	27.7	42.0	16.0	16.2		9.5	41.5
25A	1	34.5	52.0	18.0	21.2		12.7	48.7
32A	1 1/4	43.2	60.0	19.0	29.9		12.7	50.7
40A	1 1/2	49.1	70.0	22.0	34.4		12.7	56.7
50A	2	61.1	85.0	25.0	43.1		19.1	69.1
65A	2 1/2	77.1	105.0	28.0	57.3		19.1	75.1
80A	3	90.0	120.0	31.0	66.9		19.1	81.1
100A	4	115.4	146.0	35.0	87.3		25.4	95.4

ステンレス鋼

フルカップリング



FC SW

単位:mm

呼称	記号	B	F	※C	D		E	L
					1欄	2欄		
A	B	Sch 80						
8A	1/4	14.3	22.0	9.6	9.4	7.8	6.4	25.6
10A	3/8	17.8	28.0	9.6	12.7	10.9	6.4	25.6
15A	1/2	22.2	32.0	9.6	16.1	14.3	9.5	28.7
20A	3/4	27.7	38.0	12.7	21.4	19.4	9.5	34.9
25A	1	34.5	46.0	12.7	27.2	25.0	12.7	38.1
32A	1 1/4	43.2	55.0	12.7	35.5	32.9	12.7	38.1
40A	1 1/2	49.1	65.0	12.7	41.2	38.4	12.7	38.1
50A	2	61.1	75.0	15.9	52.7	49.5	19.1	50.9
65A	2 1/2	77.1	95.0	15.9	65.9	62.3	19.1	50.9
80A	3	90.0	110.0	15.9	78.1	73.9	19.1	50.9
A	B	Sch 160						
15A	1/2	22.2	35.0	9.6	12.3		9.5	28.7
20A	3/4	27.7	42.0	12.7	16.2		9.5	34.9
25A	1	34.5	50.0	12.7	21.2		12.7	38.1
32A	1 1/4	43.2	60.0	12.7	29.9		12.7	38.1
40A	1 1/2	49.1	70.0	12.7	34.4		12.7	38.1
50A	2	61.1	85.0	15.9	43.1		19.1	50.9
65A	2 1/2	77.1	105.0	15.9	57.3		19.1	50.9
80A	3	90.0	120.0	15.9	66.9		19.1	50.9

注 ※Cは最小寸法を示します。