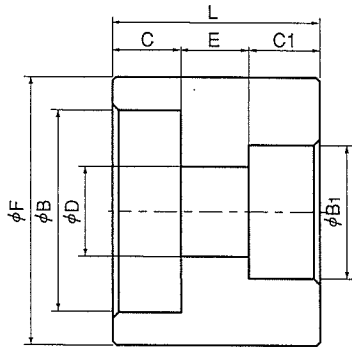


炭素鋼

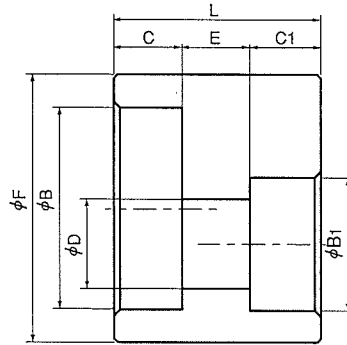
レジューサ(同心)



SW RC

単位:mm

レジューサ(偏心)



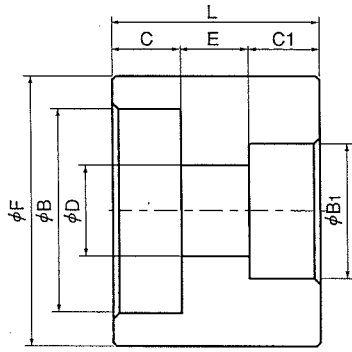
SW ER

単位:mm

呼称	記号	B	B ₁	F	C	C ₁	D		E	L				
							1 欄	2 欄						
		Sch 80												
10A×8A	3/8×1/4	17.8	14.3	27.0	13.0	10.0	9.4	7.8	6.4	29.4				
15A×8A	1/2×1/4	22.2	14.3	32.0	13.0	10.0	9.4	7.8	9.5	32.5				
15A×10A	1/2×3/8		17.8			13.0	12.7	10.9		35.5				
20A×8A	3/4×1/4	27.7	14.3	38.0	15.0	10.0	9.4	7.8	9.5	34.5				
20A×10A	3/4×3/8		17.8			13.0	12.7	10.9		37.5				
20A×15A	3/4×1/2		22.2			13.0	16.1	14.3		37.5				
25A×10A	1×3/8	34.5	17.8	46.0	16.0	13.0	12.7	10.9	12.7	41.7				
25A×15A	1×1/2		22.2			13.0	16.1	14.3		41.7				
25A×20A	1×3/4		27.7			15.0	21.4	19.4		43.7				
32A×15A	1 1/4×1/2	43.2	22.2	57.0	18.0	13.0	16.1	14.3	12.7	43.7				
32A×20A	1 1/4×3/4		27.7			15.0	21.4	19.4		45.7				
32A×25A	1 1/4×1		34.5			16.0	27.2	25.0		46.7				
40A×15A	1 1/2×1/2	49.1	22.2	63.0	19.0	13.0	16.1	14.3	12.7	44.7				
40A×20A	1 1/2×3/4		27.7			15.0	21.4	19.4		46.7				
40A×25A	1 1/2×1		34.5			16.0	27.2	25.0		47.7				
40A×32A	1 1/2×1 1/4		43.2			18.0	35.5	32.9		49.7				
50A×20A	2×3/4	61.1	27.7	75.0	22.0	15.0	21.4	19.4	19.1	56.1				
50A×25A	2×1		34.5			16.0	27.2	25.0		57.1				
50A×32A	2×1 1/4		43.2			18.0	35.5	32.9		59.1				
50A×40A	2×1 1/2		49.1			19.0	41.2	38.4		60.1				
65A×25A	2 1/2×1		34.5			16.0	27.2	19.4		61.1				
65A×32A	2 1/2×1 1/4	77.1	43.2	95.0	26.0	18.0	35.5	32.9	19.1	63.1				
65A×40A	2 1/2×1 1/2		49.1			19.0	41.2	38.4		64.1				
65A×50A	2 1/2×2		61.1			22.0	52.7	49.5		67.1				
80A×32A	3×1 1/4		43.2			18.0	35.5	32.9		66.1				
80A×40A	3×1 1/2	90.0	49.1	110.0	29.0	19.0	41.2	38.4	19.1	67.1				
80A×50A	3×2		61.1			22.0	52.7	49.5		70.1				
80A×65A	3×2 1/2		77.1			26.0	65.9	62.3		74.1				
			Sch 160											
20A×15A	3/4×1/2	27.7	22.2	42.0	16.0	14.0	12.3		9.5	39.5				
25A×15A	1×1/2	34.5	22.2	52.0	18.0	14.0	12.3		12.7	44.7				
25A×20A	1×3/4		27.7			16.0	16.2			46.7				
32A×15A	1 1/4×1/2	43.2	22.2	60.0	19.0	14.0	12.3		12.7	45.7				
32A×20A	1 1/4×3/4		27.7			16.0	16.2			47.7				
32A×25A	1 1/4×1		34.5			18.0	21.2			49.7				
40A×15A	1 1/2×1/2	49.1	22.2	70.0	22.0	14.0	12.3		12.7	48.7				
40A×20A	1 1/2×3/4		27.7			16.0	16.2			50.7				
40A×25A	1 1/2×1		34.5			18.0	21.2			52.7				
40A×32A	1 1/2×1 1/4		43.2			19.0	29.9			53.7				
50A×20A	2×3/4	61.1	27.7	85.0	25.0	16.0	16.2		19.1	60.1				
50A×25A	2×1		34.5			18.0	21.2			62.1				
50A×32A	2×1 1/4		43.2			19.0	29.9			63.1				
50A×40A	2×1 1/2		49.1								34.4			66.1

ステンレス鋼

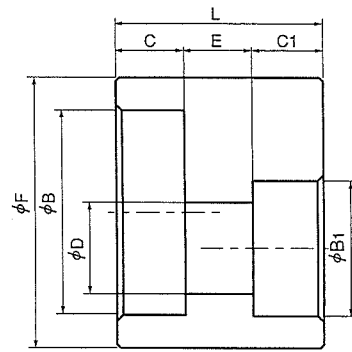
レジューサ(同心)



SW RC

単位:mm

レジューサ(偏心)



SW ER

単位:mm

呼称	記号	B	B1	F	※C	※C1	D		E	L
							1欄	2欄		
		Sch 80								
A	B									
10A×8A	3/8×1/4	17.8	14.3	28.0	9.6	9.6	9.4	7.8	6.4	25.6
15A×8A	1/2×1/4	22.2	14.3	32.0	9.6	9.6	9.4	7.8	9.5	28.7
15A×10A	1/2×3/8		17.8			9.6	12.7	10.9		28.7
20A×8A	3/4×1/4	27.7	14.3	38.0	12.7	9.6	9.4	7.8	9.5	31.8
20A×10A	3/4×3/8		17.8			9.6	12.7	10.9		31.8
20A×15A	3/4×1/2		22.2			9.6	16.1	14.3		31.8
25A×10A	1×3/8	34.5	17.8	46.0	12.7	9.6	12.7	10.9	12.7	35.0
25A×15A	1×1/2		22.2			9.6	16.1	14.3		35.0
25A×20A	1×3/4		27.7			12.7	21.4	19.4		38.1
32A×15A	1 1/4×1/2		22.2			9.6	16.1	14.3		35.0
32A×20A	1 1/4×3/4	43.2	27.7	55.0	12.7	12.7	21.4	19.4	12.7	38.1
32A×25A	1 1/4×1		34.5			12.7	27.2	25.0		38.1
40A×15A	1 1/2×1/2		22.2			9.6	16.1	14.3		35.0
40A×20A	1 1/2×3/4	49.1	27.7	65.0	12.7	12.7	21.4	19.4	12.7	38.1
40A×25A	1 1/2×1		34.5			12.7	27.2	25.0		38.1
40A×32A	1 1/2×1 1/4		43.2			12.7	35.5	32.9		38.1
50A×20A	2×3/4		27.7			12.7	21.4	19.4		47.7
50A×25A	2×1	61.1	34.5	75.0	15.9	12.7	27.2	25.0	19.1	47.7
50A×32A	2×1 1/4		43.2			12.7	35.5	32.9		47.7
50A×40A	2×1 1/2		49.1			12.7	41.2	38.4		47.7
65A×25A	2 1/2×1		34.5			12.7	27.2	19.4		47.7
65A×32A	2 1/2×1 1/4	77.1	43.2	95.0	15.9	12.7	35.5	32.9	19.1	47.7
65A×40A	2 1/2×1 1/2		49.1			12.7	41.2	38.4		47.7
65A×50A	2 1/2×2		61.1			15.9	52.7	49.5		50.9
80A×32A	3×1 1/4		43.2			12.7	35.5	32.9		47.7
80A×40A	3×1 1/2	90.0	49.1	110.0	15.9	12.7	41.2	38.4	19.1	47.7
80A×50A	3×2		61.1			15.9	52.7	49.5		50.9
80A×65A	3×2 1/2		77.1			15.9	65.9	62.3		50.9
			Sch 160							
A	B									
20A×15A	3/4×1/2	27.7	22.2	42.0	12.7	9.6	12.3		9.5	31.8
25A×15A	1×1/2	34.5	22.2	50.0	12.7	9.6	12.3		12.7	35.0
25A×20A	1×3/4		27.7			12.7	16.2			38.1
32A×15A	1 1/4×1/2	43.2	22.2	60.0	12.7	9.6	12.3		12.7	35.0
32A×20A	1 1/4×3/4		27.7			12.7	16.2			38.1
32A×25A	1 1/4×1		34.5			12.7	21.2			38.1
40A×15A	1 1/2×1/2	49.1	22.2	70.0	12.7	9.6	12.3		12.7	35.0
40A×20A	1 1/2×3/4		27.7			12.7	16.2			38.1
40A×25A	1 1/2×1		34.5			12.7	21.2			38.1
40A×32A	1 1/2×1 1/4		43.2			12.7	29.9			38.1
50A×20A	2×3/4	61.1	27.7	85.0	15.9	12.7	16.2		19.1	47.7
50A×25A	2×1		34.5			12.7	21.2			47.7
50A×32A	2×1 1/4		43.2			12.7	29.9			47.7
50A×40A	2×1 1/2		49.1			12.7	34.4			47.7

注 ※C、C1は、最小寸法を示します。